

BUILDING TRUST. BUILDING RELATIONS

Moghal Constructions has built itself a rich legacy in the real estate domain. Evolving from its parent establishment Moghal group, it has over two decades of rich experience and has won accolades and appreciation from customers for its reliability, transparency and trust. The company's strict adherence to quality-benchmarks is what keeps customers satisfied. High standards and innovative thinking are propelling the company to dot the city's skyline with many beautiful landmarks.

www.moghalconstructions.com

11-4-637/1, 1st Floor, Moghal Chambers,
A.C. Guards, Opp. I.T Tower, Hyderabad - 04, India.
Email: moghalconstructions@gmail.com,

Ph : 040-23321599, +91 98490 10033.

Architect : **NAZ & Associates**
Ph : 040-23321599

Structual Engineer: **Md Amer Aziz Khan**
Cell: 98660 77181

NOTE : This brochure is only a conceptual presentation of the project and not a legal offering.
The promoters reserve the right to make changes in the elevation, plans and specifications as deemed fit.

A CROWN OF EXCLUSIVITY AND HAPPINESS.

Moghal
MERAKI

A place with a royal touch

**2 & 3 BEDROOM DELUXE FLATS @ Golden Heights Colony,
Near PVNR Express Way, Rajendra Nagar.**





A HEART-THROB OF
A PLACE!



Moghal MERAKI

A place with a royal touch

Moghal Meraki is a majestic tower soaring into the skies amidst a bustling city and rapidly growing commercial hub. Located in the midst of lively Attapur area, the high-rise is sure to make heads turn with its impressive exteriors and plush interiors. Undoubtedly, a home here offers many benefits on a silver platter as it is strategically located amidst academic institutes, shopping malls, up-market showrooms, cinema halls, etc. It's easier to put one's worries at rest and relish the lifestyle that's simply superb in every way. Own a house here to enjoy the world!

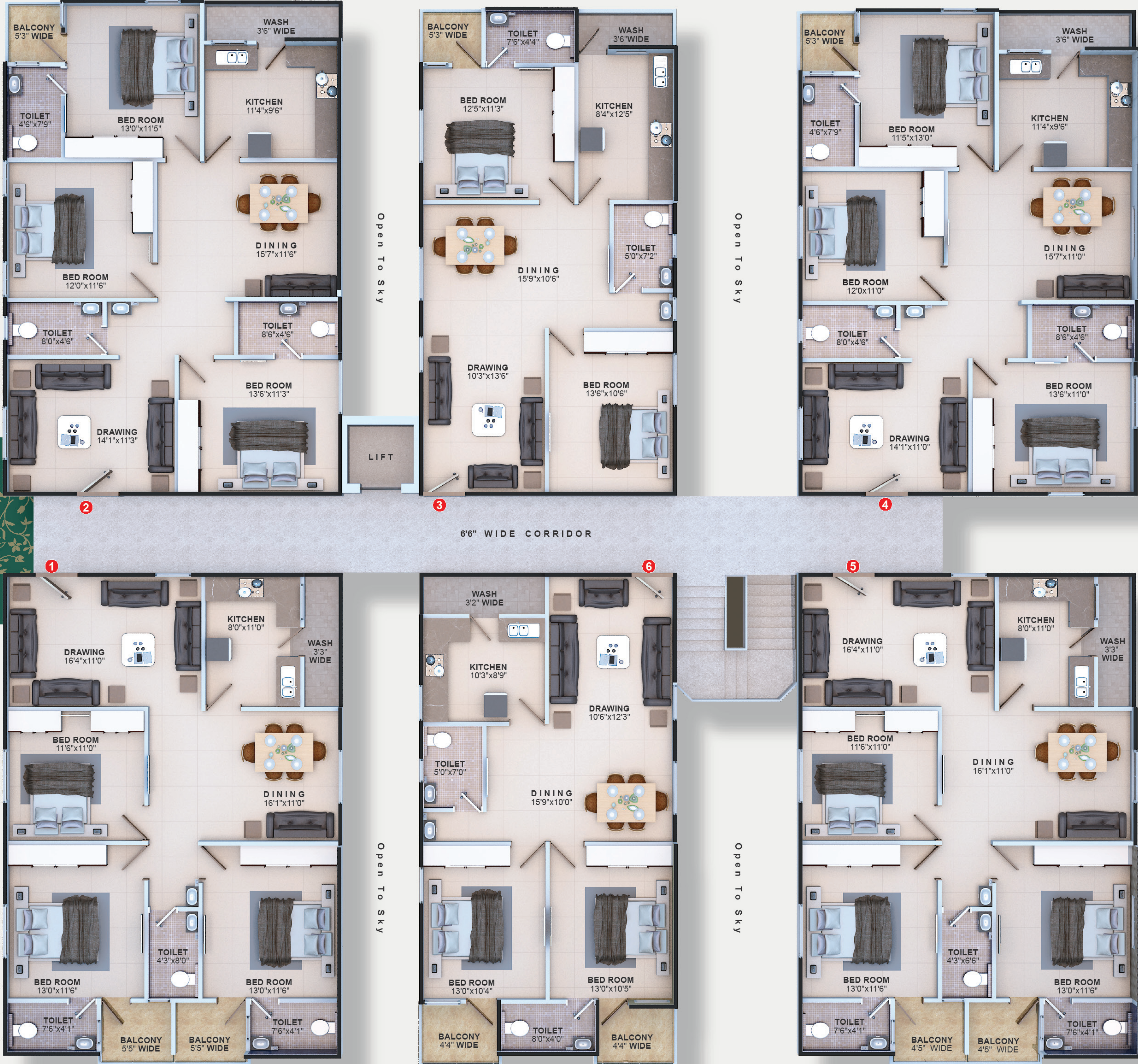
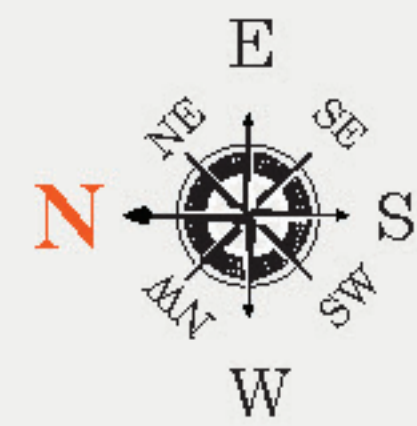
MOGHAL MERAKI - YOUR WORLD OF
AMUSEMENT!

The word “Meraki” is supposedly of Greek origin and means: to do something with soul, creativity or love, to put something of yourself at your work. The word is purposefully chosen as it signifies that a house here is something you’ll love and cherish a lifetime. Splendid setting, spacious and luxurious rooms, great neighbours, extraordinary location...are just the beginning of your lifetime romance with this awesome place. Thoughtfully planned, it’s the perfect fit for your family to relish the diverse facets of an exciting lifestyle.

Moghal
MERAKI
A place with a royal touch

TYPICAL FLOOR PLAN

AREA STATEMENT		
FLAT	BHK	Sft.
1	3 BHK	1455
2	3 BHK	1497
3	2 BHK	1120
4	3 BHK	1470
5	3 BHK	1455
6	2 BHK	1107



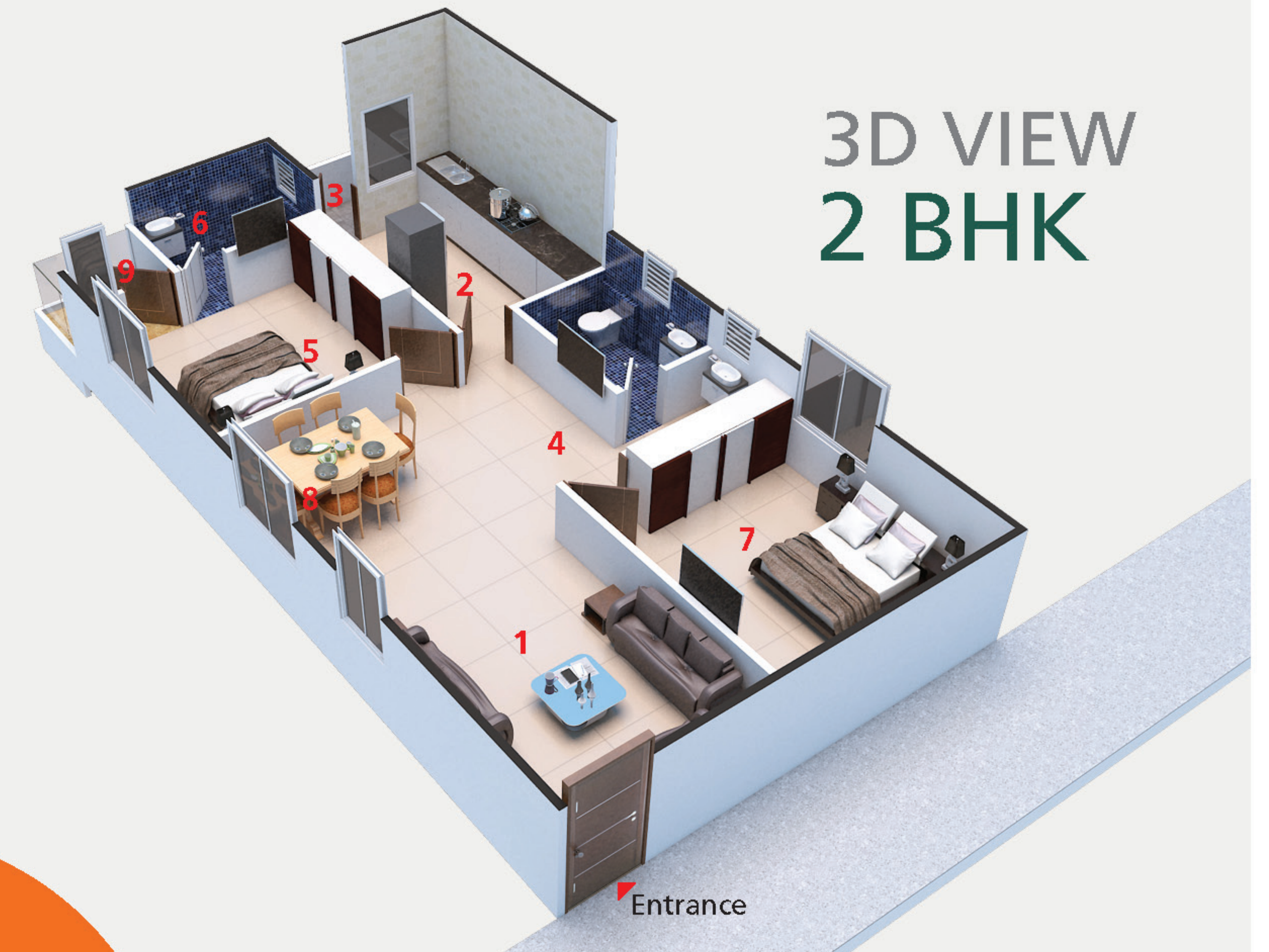
3D VIEW 3 BHK



Flat No. **1, 5**

- 1) Living
- 2) Kitchen
- 3) Utility
- 4) Dining
- 5) M. Bedroom
- 6) M. Toilet
- 7) C. Bedroom
- 8) A. Toilet
- 9) G. Bedroom
- 10) C. Toilet
- 11) Balcony
- 12) Balcony

3D VIEW 2 BHK



Flat No. **3**

- 1) Living
- 2) Kitchen
- 3) Utility
- 4) Dining
- 5) M. Bedroom
- 6) M. Toilet
- 7) C. Bedroom
- 8) C. Toilet
- 9) Balcony

DISCOVER AND EXPERIENCE
**LIFE IN THE
FAST LANE!**

Moghal
MERAKI

A place with a royal touch

Attapur is perhaps one of the fastest growing places in terms of real estate. Owning a house here is an awfully wise option if you are planning for a future investment. For that purpose, Moghal Meraki is an ideal bet! Built by excellent architects whose eye for detail surpasses only a few, Moghal Meraki has a variety of options amongst its 3 BHKs and 2 BHKs which are only thirty in number. It's time to invest in your future in safe and secure hands.

Flat No. **2, 4**

- 1) Living
- 2) Kitchen
- 3) Utility
- 4) Dining
- 5) M. Bedroom
- 6) M. Toilet
- 7) C. Bedroom
- 8) A. Toilet
- 9) G. Bedroom
- 10) C. Toilet
- 11) Balcony



3D VIEW 3 BHK

Flat No. **6**

- 1) Living
- 2) Kitchen
- 3) Utility
- 4) Dining
- 5) M. Bedroom
- 6) M. Toilet
- 7) C. Bedroom
- 8) C. Toilet
- 9) Balcony
- 10) Balcony



3D VIEW 2 BHK

A MAJESTIC ARRAY OF
FACILITIES.

Moghal Meraki has no peers in the area when it comes to offering multiple advantages. Right from the high-grade construction quality to lavishly designed interiors, the project speaks of elegance and style. The undulated air and sunshine add their own glitter to the huge balconies, bringing respite to tired souls and casting a distinct spell of magical relief to the dwellers. Excellent landscaping, instant power backups, mounted CCTV cameras, intercom facilities speak of absolute security and life-long happiness to resident dwellers.



Total Units:

30

Elevator:

Six passenger V3F lift
of Standard make.

Security System:

CCTV

CCTV surveillance for
common areas

Land Scaping:

Aesthetically designed
Land scaping..

Power Backup:

power for Lift Corridor and
parking.

Units Type:

2&3

Bed rooms

Intercom:

Each unit will be
connected to security
through intercom.

Walls:

Independent flats
with no common walls





SPECIFICATIONS

FOUNDATION

The building shall have an RCC structure foundation design.

SUPER STRUCTURE

The structure of the building shall be in Reinforced Cement Concrete

WALL:

4 inch thick in Traditional Light weight Red Brick or AAC blocks for all walls.

SURFACE FINISH:

- a) Internal: Smooth cement based white Putty finish for interior walls.
- b) External: Surfaces shall be of two-coat sponge finish.

PAINT:

- a) Internal: Plastic emulsion Paint for internal walls.
- b) External: Two coats of Exterior emulsion Paint (ACE Paint).

FLOORING:

- a) Living / Dining: Flooring of Vitrified tiles or Marble Slabs with skirting.
- b) Bed rooms: Flooring of Vitrified tiles or Marble tiles with skirting.
- c) Corridor and Staircase: Granite Flooring.
- d) Lift Cladding: Lift wall with Granite.
- e) Parking: Designer Parking Tiles.

WINDOWS:

UPVC windows with glass panel and safety grills.

DOORS

- a) Main Door: Teak wood Frame with Designer doors and Hardware of standard Quality.
- b) Other Door: Teak wood Frame with moulded Shutter and Hardware of standard Quality.

KITCHEN

- Granite platform with Stainless steel sink.
- 2'6" glazed tiles dado above kitchen platform.
- Provision for exhaust fan and suitable electrical points for kitchen appliances.

TOILETS:

- a) Porcelain items: All Porcelain items of CERA/HINDWARE make in all toilets.
- b) C P Fittings: All of EssEss make (Brand of Asian paints) in all toilets.
- c) Plumbing: Concealed piping of CPVC with fittings in all toilets.
- d) Glazed tile dadoing: Upto door height of Standard makes in all toilets.
- e) Flooring: Anti-skid Ceramic tiles in all toilets.

ELECTRICAL:

- a) Wiring: Concealed copper wiring of Standard ISI make.
- b) Gadgets/Switches: Modular switches and sockets of Anchor and provision for all required gadgets of Standard make.

AIR CONDITIONING:

A.C points for each flat for Living area and Bedrooms.

WATER SUPPLY

Water supply from borewell in addition to Municipal water supply.



Moghal
MERAKI
A place with a royal touch